

# Architek

5 COLOURS | 1 FINISH | 5 SIZES



S  
O  
S  
L  
U  
S

Floor:  
2FJY101

# Architek






Architek is a versatile concrete effect porcelain material that has been specifically created to complement both commercial and residential urban influenced architectural projects.



Floor:  
2FJY103



## SIZES AND FINISHES

					
	300x600 9/10mm	375x755 10mm	600x600 10mm	755x755 10mm	755x1510 10mm
All colours	♥	♥	♥	♥	♥

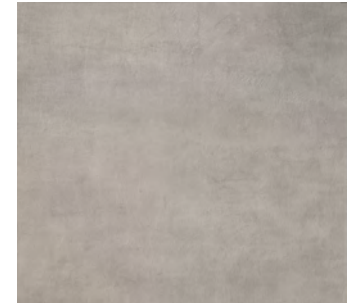
♥ Natural R10



Builder  
2FJY105



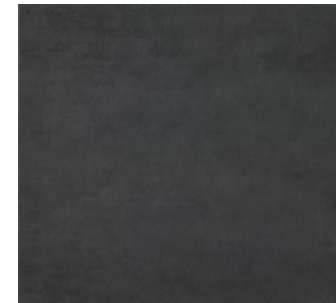
Structure  
2FJY102



Designer  
2FJY101



Planner  
2FJY104



Engineer  
2FJY103

**APPEARANCE**  
Concrete

**MATERIAL**  
Porcelain

**USAGE**  
Floors and Walls

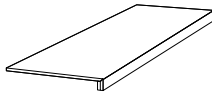
**SHADE VARIATION**  
V3 - Moderate

**SPECIAL PIECES**  
Available in all colours.  
For more information contact our sales team.

**BATTISCOPIA**  
70x600mm  
70x755mm



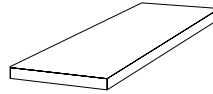
**GRADINO**  
300x600mm  
375x755mm



**GRADONE**  
330x755mm



**ANGALORE**  
330x755mm



## ISO 10545 RESULTS

**2. DIMENSIONS AND SURFACE QUALITY**  
Conforms

**3. WATER ABSORPTION**  
< 0.1%

**4. FLEXURAL STRENGTH**  
> 45 N/mm<sup>2</sup>

**6. DEEP ABRASION RESISTANCE**  
Conforms

**8. LINEAR THERMAL EXPANSION**  
 $6 \times 10^{-6} \text{ } ^\circ\text{C}$

**9. THERMAL SHOCK RESISTANCE**  
No rating

**10. MOISTURE EXPANSION**  
No rating

**12. FROST RESISTANCE**  
Conforms

**13. CHEMICAL RESISTANCE**  
Conforms

**14. STAIN RESISTANCE**  
Conforms

**SLIP RESISTANCE  
(DIN 51130)**  
Natural R10

## MANUFACTURER CERTIFICATIONS:



EPD: Available  
ISO 14001

For LEED, BREEAM and WELL information, please ask for details. On request tiles can be tested to PTV BS7976-2. HSE surface roughness and NCS Colour values are also available upon request.  
All sizes shown are nominal. Due to the printing process and differing screen values actual tile colours may vary. E&OE.  
© Solus Ceramics Limited 2023. 006a.