

Metallico Wall

5 COLOURS | 1 FINISH | 1 SIZE



S
O
L
U
S

Wall:
5FTJ104

Metallico Wall

A vibrant range of brick shaped wall tiles featuring rusty edges and an undulating gloss finish.



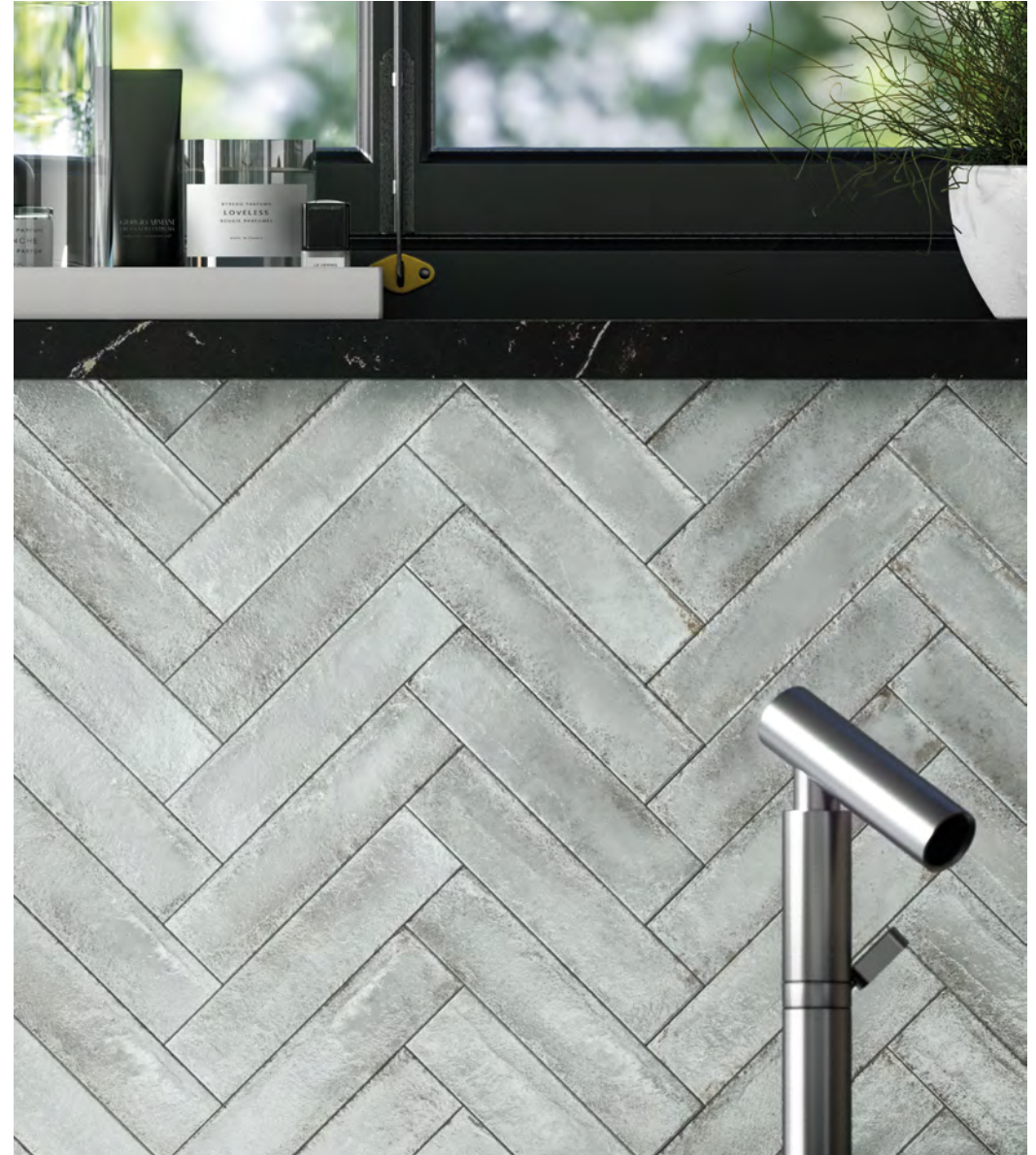
Wall:
5FTJ101

Metallico Wall



ABOVE
Wall:
5FTJ101

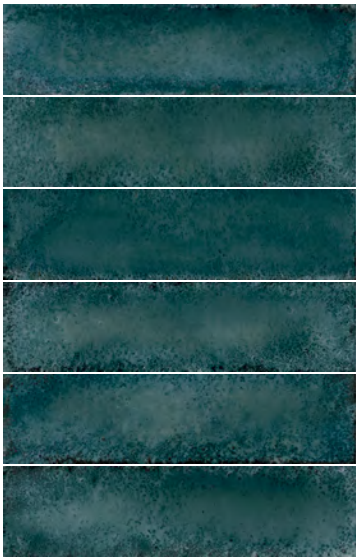
RIGHT
Wall:
5FTJ102



ABOVE
Wall:
5FTJ102



Astonish
5FTJ103



Glitter
5FTJ104



Fascinate
5FTJ105





Stunning
5FTJ101



Hypnotize
5FTJ102

Metallico Wall

APPEARANCE Metallic	SIZES AND FINISHES	
MATERIAL Porcelain		60x240 9.5mm
USAGE Walls only		
SHADE VARIATION V3 - Moderate	All colours	 Lux

NOTES

To avoid lippage we recommend the use of self-levelling spacers.

For complementary floor and wall tiles, see our Metallico range.

ISO 10545 RESULTS	
2. DIMENSIONS AND SURFACE QUALITY Conforms	10. MOISTURE EXPANSION No rating
3. WATER ABSORPTION Conforms	12. FROST RESISTANCE Conforms
4. FLEXURAL STRENGTH ≥ 45 N/mm²	13. CHEMICAL RESISTANCE Conforms
6. DEEP ABRASION RESISTANCE No rating	14. STAIN RESISTANCE Conforms
8. LINEAR THERMAL EXPANSION No rating	
9. THERMAL SHOCK RESISTANCE No rating	

MANUFACTURER CERTIFICATIONS:



EPD: Available
ISO 14001

For LEED, BREEAM and WELL information, please ask for details. NCS Colour values are available upon request.
All sizes shown are nominal. Due to the printing process and differing screen values actual tile colours may vary. E&OE.
© Solus Ceramics Limited 2023. 002a.